

Thiso Memoirs

of

Taylor High School

North Bend, Ohio

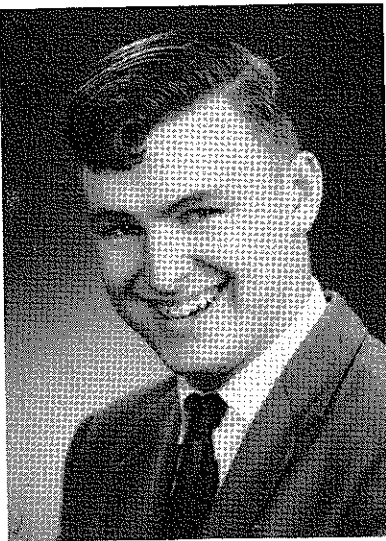
Sponsored

by

JUNIOR AND SENIOR CLASSES

1959

In Memoriam



EUGENE BOWMAN

Born
August 8, 1937

Died
May 12, 1959

"He shall grow not old,
As we that are left to grow old:
Age shall not weary him,
Nor the years condemn.

At the going down of the sun,
And in the morning—
We shall remember him."

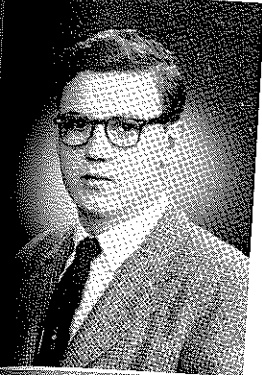
The Class of '59



BARBARA ARCHER

*"Her voice is like
The murmur of a stream."*

Band 1-2-3-4
Glee Club 3
Thespians 1-2-3
Boosters Club 1
Junior Red Cross
"Stardust"



ROBERT BASTIAN

*"Virtue may flourish
In an old cravat."*



EDNA ATKINS

*"Sweet piece
Of bashful maiden art."*

Pep Club
Glee Club
"Rings in the Sawdust"
Courtesy Council



JACK BENTER

*"To strive, to seek,
To find, and not to yield."*

Vice President Junior Class
Football 2-3-4
Basketball 1-2-3
Courtesy Council
Boosters' Club



BEVERLY BAILEY

*"Gladness
In every face expressed."*

Majorette 1-2-3-4
F.T.A. 1-2
Thespians 1-2-3-4
"Rings in the Sawdust"

CAROL BARTLES

*"Heaven does not choose its
elect
From among the great and
wealthy."*

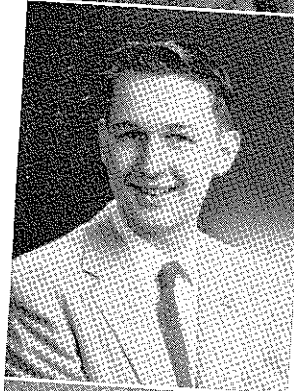
Courtesy Council
Pep Club 1-4
Glee Club 4
G.A.A. 4



WILLIAM BENTER

*"His frame was firm—
His powers were bright."*

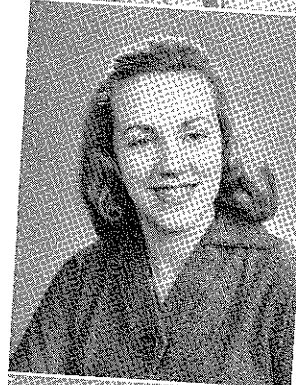
Key Club 3-4
Honor Roll 1-3
President of Junior Class
Annual Staff 4
Boosters' Club



MYRNA BOWLING

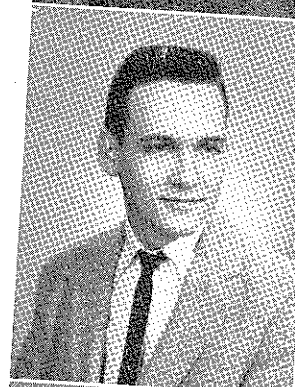
*"Continuous as the stars
That shine."*

Glee Club



STANLEY BENTON

*"He capered this way
And tumbled that."*



PATRICIA BROWN

*"Lived with the sunshine
And the moon's delight."*

Glee Club





DARLA CHASE

*"The kindling thought,
The hopeful words."*

Thespians



LONNIE BLACK

*"Who walks through the fire,
Will hardly heed the smoke."*

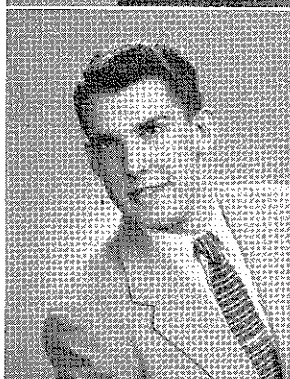


BETTY COATES

*"Her open eyes
Desire the truth."*

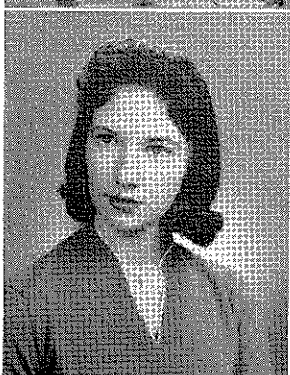
Boosters' Club
Glee Club
Thespians

"Rings in the Sawdust"



CHARLES BOND

*"With the conversing,
I forget all time."*



JANET COOK

*"The perfection of art
Is to conceal art."*

Harrison High 9-10-11
Glee Club
Pep Club
G.A.A.

PHYLLIS COX

*"Her gracious finger marks
The healing flowers."*

National Honor Society 4
"Stardust"
Pep Club 1-4



DAVID BONHAM

*"The new-born poet
Left the beaten course."*

Band 1-2-3-4
Basketball 1-2-3-4
Golf 1-2-3-4
Track 4
Football Manager 1
Scholastic Team 1
Honor Roll 1
Student Council
Glee Club 3
Key Club
Buckeye Boys' State
"Stardust"



KAY DAVIS

*"She blesses
With surprise."*

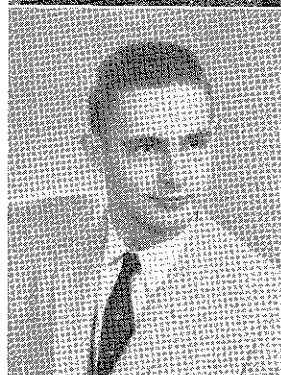
Majorette 1-2-3-4
Pep Club 1-2-3-4
Glee Club 1-2-3-4
Boosters' Club 1
G.A.A. 1-2-3-4
"Rings in the Sawdust"
Courtesy Council 1



CARL BRAUN

*"My tools are
But common ones."*

Glee Club 2-4
Courtesy Council
Boosters' Club 1-2
"Stardust"
"Miss Chatterbox"



RUTH ANN DAVIS

*"Graceful and useful
All she does."*

Glee Club





JAMES BURNS

*"Bravery never
Goes out of fashion."*



GAIL BeBRULER

*"We love the precepts
For the teacher's sake."*

Honor Roll 1-2
F.T.A. 1-2-3-4
Thespians 1-2-3-4
Glee Club 4
Band 1-2-3
Annual Staff 4
G.A.A. 1-2
4-H 1
Safety Club 2
Pep Club 1-2
Post Reporter
Ohio School Speech League
"Miss Chatterbox"
"Stardust"



RALPH COOPER

*"No legacy is so rich
As honesty."*

Football 4
Baseball 4
Boosters' Club 4
Post All-Star
Prom King



SANDRA DODT

*"So full on life
Her magic mirror fell."*

Thespians 1-2-3-4
Cheerleader 3-4
G.A.A. 3-4
Glee Club 3-4
Pep Club 3-4
Homecoming Queen
Honor Roll 4



CALVIN FLEEK

*"The greater the man,
The greater courtesy."*

PATRICIA DORSEY

*"A healthy mind
In a healthy body."*

Lebanon High School 1-2-3
Glee Club 4
Pep Club 4
G.A.A.



DONALD GETZ

*"To freedom's cause
In every age and clime."*

Football 1
Track 3-4
Pep Club 1



DONNA DUKE

*"A pleasanter friend
You never spied."*

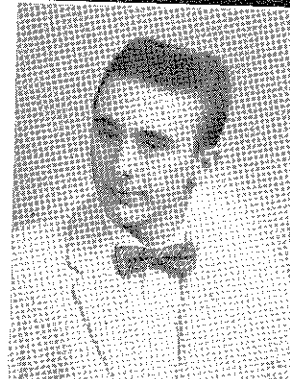
G.A.A.
Pep Club



AMZI GRAY

*"Joyfully,
He drew nigh."*

Baseball 4
Basketball 1-4
"Stardust"
"Miss Chatterbox"
Courtesy Council
Glee Club

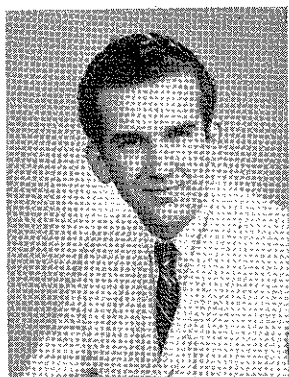


JOSEPHINE FOSSITT

*"A healthy frame,
A quiet mind."*

Thespians 1-2-3-4
Band 1
G.A.A. 4
Pep Club 4
Boosters' Club
"Miss Chatterbox"

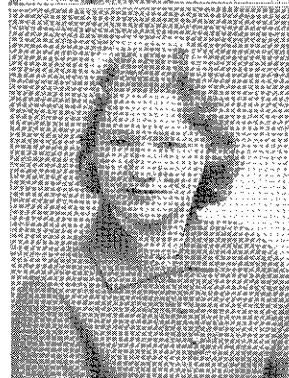




DAVID GREER

*"But hear him
Greet the morning."*

Football 2-3-4
Basketball 2-3
Boosters 3



DOROTHY GABBARD

*"Great thoughts
Come from the heart."*

Glee Club
"Rings in the Sawdust"



ROBERT HAYES

*"All the world
Was made for me."*

Football 2-3-4
Basketball 1-2
Thespians
Boosters' Club
Courtesy Council



FANNY HALL

*"Weaving with patient toil
And willing care."*

Glee Club



CHARLES HEILMAYER

*"To learn to bear is easier
Than to shun."*

EUGENE HOFFMAN

*"A living flash of light
He flew."*



RUBY HANSMANN

*"A dewy freshness
Fills the silent air."*

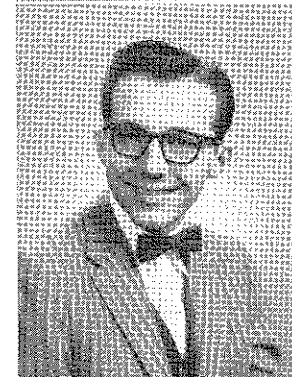
Band
Glee Club
Courtesy Council



KENNETH HUST

*"And the music's not im-
mortal;
But the world has made it
sweet."*

Band 1-3-4
Glee Club 1-2-3-4
Pep Club
Annual Staff 3
Honor Roll 3-4
4-H
"Rings in the Sawdust"
"Miss Chatterbox"
Safety Council
"Mikado"



CHARLOTTE
HOLLINGSWORTH

*"The hidden soul
Of harmony."*

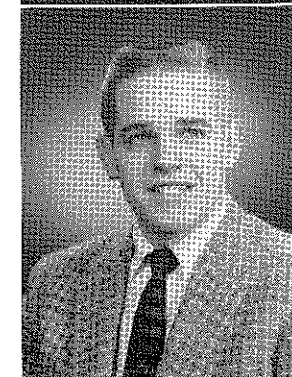
Boosters' Club
Glee Club



FLOYD KAYLOR

*"Thrice welcome,
One and all!"*

Georgetown High 9
Basketball 2-3-4
Baseball 2-3
Football 2-3-4
Glee Club 2-3-4





DARLENE JAMES

*"The voices of morning!
How sweet is their thrill!"*

Glee Club 1-2-3-4
Cheerleader 2-3-4
Majorette 1
Thespians 2-3-4
"Mikado"
"Rings in the Sawdust"



FRANK LaCALAMETO

*"A man
After his own heart."*

Football



BEVERLY JUTZI

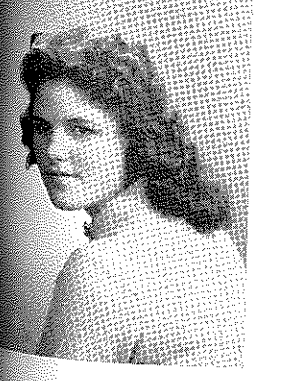
*"To gladden the world
As around I go."*

Honor Roll 1-2-3-4
Scholastic Team 1
Courtesy Council 1
"Miss Chatterbox"
Student Council 4



CARL LACEY

*"Where health and plenty
Cheered the laboring swain."*



PATRICIA KING

*"Communes with
The voice of truth."*

Glee Club

HARRY LIND

*"Child of the soil
Whom fortune sends."*

Football 1
Baseball 3
Thespians 2-3-4
Pep Club 1-3
Senior Class President
Buckeye Boys' State
"Stardust"
Glee Club 3-4
"Miss Chatterbox"
Coin Club 2-3-4



GLADYS KIRK

*"Faithful, gentle, good,
Wearing the rose of woman-
hood."*

Majorette 2-3-4
Pep Club



DONALD LINNEMAN

*"A picture is a poem
Without words."*

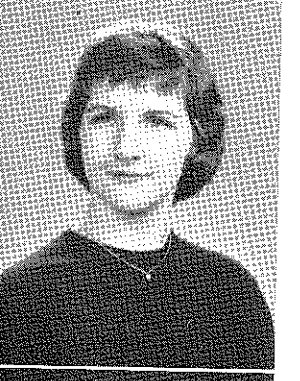
Track Manager 4



SALLY KITTLE

*"In the open sunshine
Of God's love."*

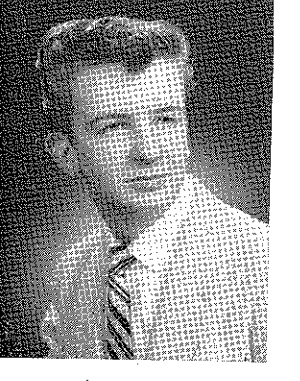
Cheerleader
Pep Club
Glee Club
G.A.A.
Secretary Junior Class



EUGENE MARTIN

*"Such sweet compulsion
Doth in music lie."*

Band 1-2-3-4
Glee Club 3-4
Pep Club 1-2

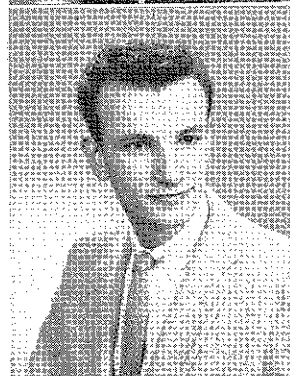




PEGGY LAMBERT

*"Hold by the right,
You double your might."*

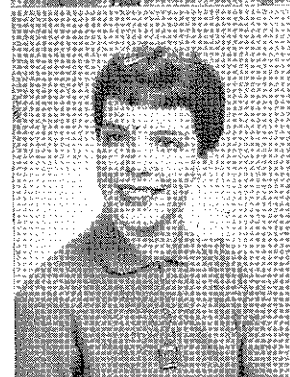
Glee Club



WILLIAM MASON

*"And he was of brave young
men,
As fine as fine might be."*

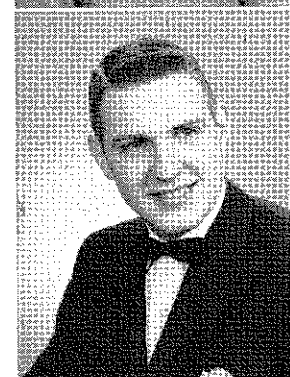
Football 1
Basketball 2
Baseball 1-2-3-4
Band 1-2-3-4
Key Club 3-4
Pep Club
Glee Club



CASSANDRA LEHRING

*"Her best companions,
Innocence and health."*

Thespians
Glee Club



TERRY MEYERS

*"Think not the poet
Lives in verse alone."*

Football 2-3
Thespians 3-4
Courtesy Council 1



MARY LEWIS

*"Health to the art
Whose glory is to give."*

Courtesy Council 3
Red Cross 4

ROGER MOORE

*"And now it was dawn,
He rose strong on his feet."*

Key Club
Boosters' Club



SANDRA MARTIN

*"No word of mine
Could half bespeak her
worth."*

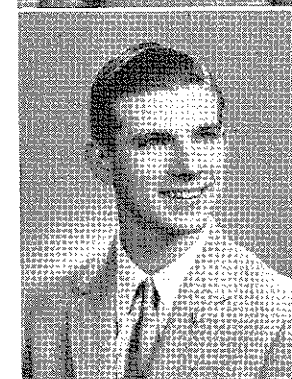
Glee Club
Annual Staff



THOMAS NEAD

*"And let thy feet be set
In midst of knowledge,
dream'd not yet."*

Band 1-2-3-4
Scholastic Team 1-2-4
National Honor Society
Operation Youth
Annual Staff
Jr. Safety Council
Safety Institute
Swimming Team 4
Key Club
Thespians
Electronics Club
"Rings in the Sawdust"
"Stardust"
"Miss Chatterbox"



BETTY MASON

*"Stick to your aim,
Though many ills befall."*

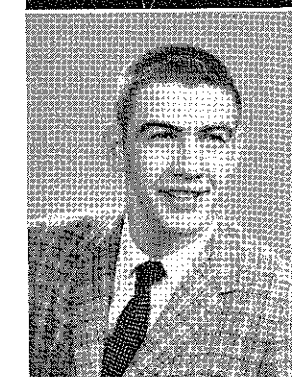
Band 1-2-3-4
Glee Club
Honor Roll
Scholastic Team



GORDON OGDEN

*"I will go forward,
Sayest thou."*

Baseball 3
Football 1-2-3-4
Basketball 1-2-3-4
Track 3
Courtesy Council
Boosters' Club





MARJORIE SCHRAUDER

*"A voice, a chime,
A chant sublime."*

G.A.A.
Glee Club
Pep Club
"Stardust"

WALLACE WILSON

*"With all good cheer
He spake and laughed aloud."*



JERRY VAUGHN

*"Thou smilest
And art still."*



LANA TURNER

*"She strove
The neighborhood to please."*

Thespians
Boosters' Club
Glee Club
"Mikado"



MARIANNE SULLIVAN

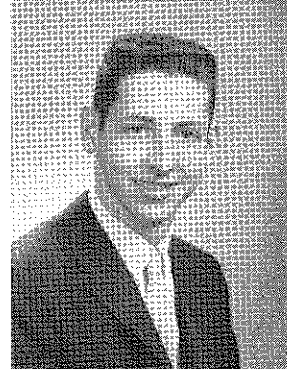
*"A pleasing countenance
Is no slight advantage."*

National Honor Society 4
Honor Roll 3
Boosters 1-3
G.A.A. 4
Pep Club 4
"Stardust"
Prom Queen



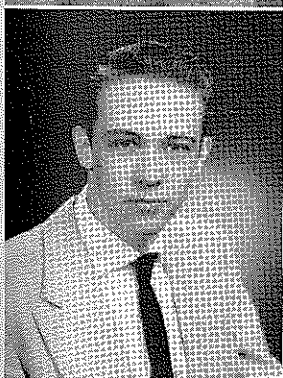
RICHARD WOLF

*"As upright
As a cedar."*



JOHN VEST

*"A merry heart
Goes all the day."*



PENNY VORDENBERG

*"Sweet day, so cool,
So calm, so birght."*

Pep Club 1
4-H 1
Post-Times Reporter 3-4
F.T.A. 4
Honor Roll 4
"Stardust"
"Miss Chatterbox"



DOROTHY SYKES

*"A web of wisdom
Wonderful and fair."*

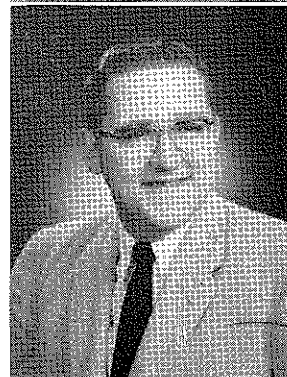
Scholastic Team 1-2-4
National Honor Society
Glee Club 1-2-3
F.T.A. 2-3-4
Thespians
Jr. Red Cross
"Stardust"
Safety Institute 2-4
Buckeye Girls' State
"Miss Chatterbox"
"Rings in the Sawdust"

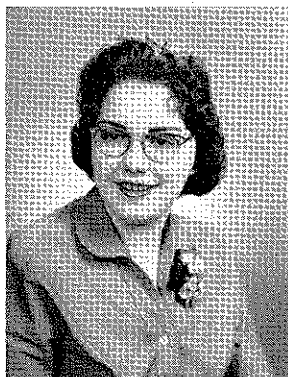


JESS WOOSLEY

*"Stout of heart
And strong of limb."*

Football 1-2
Glee Club 1-2-3
Key Club
"Mikado"
"Rings in the Sawdust"





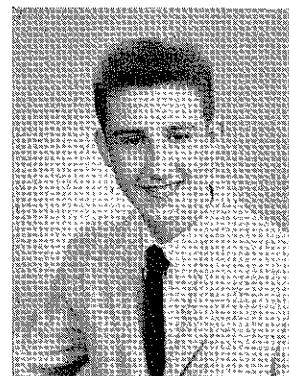
JOYCE WOODS

*"Her smile
Is very bland."*

Glee Club

EDWARD ZEISER

*"The wonderful music
With shouting and laughter."*



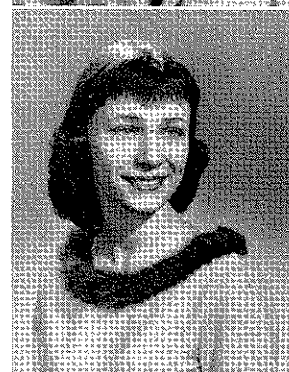
GERALD YEAROUT

*"Men of few words
Are the best men."*

GERALDINE ZIEGLER

*"To toast our wants and
wishes,
That's her way."*

Drum Majorette 1-2-3-4
Thespians 2-3-4
Boosters' Club 1
Glee Club 3-4



Malcolm Hill and Allan Smith
did not have pictures made.

SENIOR CLASS PROPHECY

Log — Starfire III

Date — June 9, 1974

Position — 2.5 lt. yrs. from Alfa Centuri — on course

Speed — 28,672,813 Km/sec

Collision with meteor cloud this morning. Several members of crew injured and relieved of duty. Port check follows.

MIKE SCHIRA, our atmosphere pilot, is now temporary space co-pilot. GENE HOFFMAN and his assistant, EDWARD ZEISER, are still working in navigation. RALPH COOPER and JAMES BURNS are resetting the gyro and radio compasses which were put out of commission by meteor "bullets". GERALD YEAROUT, chief power engineer, reported No. 2 rockets firing steady now that DONALD GETZ has finished a home-made fuel regulator which was developed on the drawing boards of TERRY SUTTON and KEN RUPE. BEN SARKA has just developed an electronic screen matter-deflector which is now being fitted to the bow of the ship by master mechanics, AMZI GRAY, CARL BRAUN, CALVIN FLEEK, and FRANK LaCALAMENTO. JUDY RAPKING, ship mineralogist, reports that the meteor, which lodged itself in BEVERLY BAILEY'S hair-dryer, is of the same metal discovered on Mars two years ago by the eminent explorer, GORDON OGDEN. The metal is named after OWEN PARSONS, the first chemist to find how to use its unbelievable radioactive power. Our power division headed by ROGER MOORE, SANDRA MARTIN, JUDY SCHARDINE, and LANA TURNER will try to adopt our emergency power unit, a new model by DAVID BONHAM, Inc., to use the meteor. Doctors DOROTHY GABBARD, JESS WOOSLEY, CASSANDRA